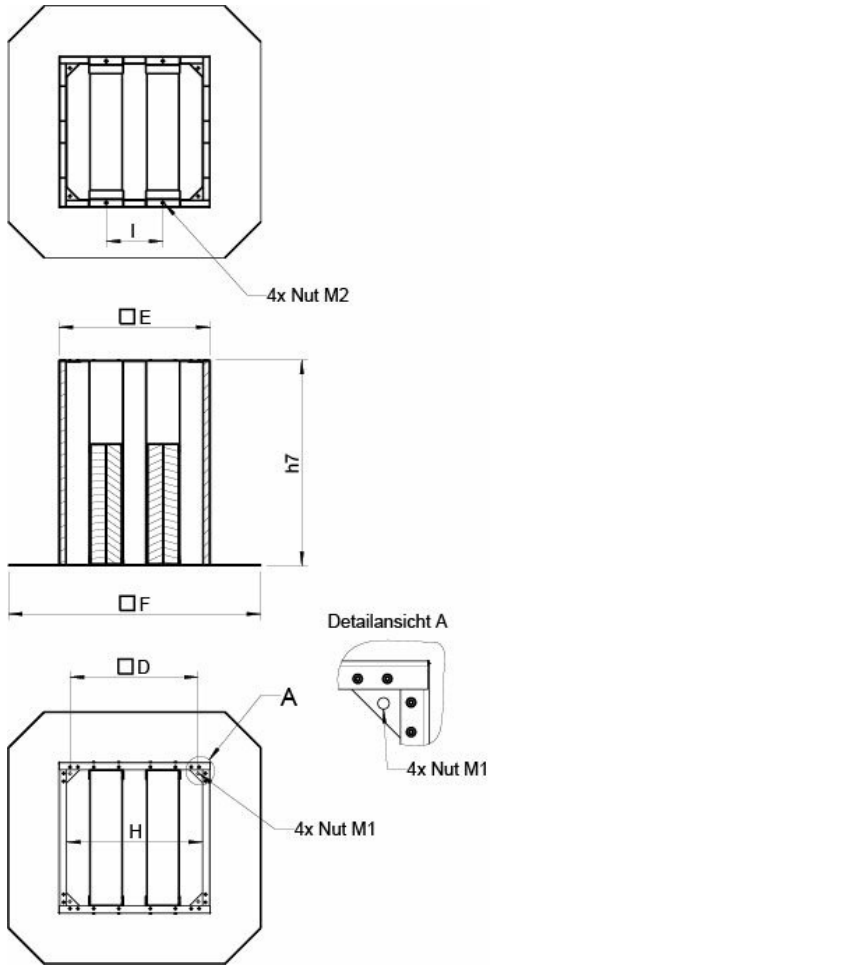


SSD 190/225	1
SSD 310/311	2
SSD 315	3
SSD 355/400	3
SSD 450/499/500	4
SSD 560/630	5
SSD 710	6
SSD 800/900	7

### Afmetingen SSD dakdoorvoer



	D	E	F	H	nut M1	nut M2	I	h7	weight(kg)
SSD 190/225*	245	297	571	258	M6	M6	114	400	5
SSD 310/311**	330	398	710	345	M6	M6	152	500	8
SSD 315M/L***	450	478	797	434	M10	M8	179	650	13
SSD 355/400	450	562	874	472	M10	M8	214	650	17
SSD 450/499/500	535	628	900	538	M10	M8	241	650	19
SSD 560/630	750	898	1200	808	M10	M8	471	700	31
SSD 710	840	985	1300	898	M10	M8	508	800	41
SSD 800/900	1050	1212	1540	1118	M12	-	-	1000	65
SSD-L 190/225	245	297	571	252	M6	M6	114	850	5
SSD-L 310/311	330	395	710	349	M6	M6	152	700	8